

NC SFI SIC
February 4th, 2026
Farm Bureau Office Raleigh, NC
10:30 am – 1:00 pm

In Attendance:

Madison	Akers	Jared	Lucas
Scott	Ashworth	Tom	Lyons
Corey	Blackwell, NC SHP	Samuel (Sammy)	MacDonald
Andrew	Brown	Leslie	McCormick
Shannon	Buckley	Jeff	Meacham
Ben	Burger	Roger	Melvin
Grayson	Byrd	John	Nash
John	Cecil	Jess	Parton
Glen	Coley	Amy	Phillips
Brian	Council	Will	Reese
Gail	Currie	Greg	Ricks
Chuck	Daniels	John	Smith
Robert	Evans	Phil	Smith
Austin	Fields	Garrett	Sumner
Hunter	Games	Andy	Sterling
Ted	Garner	Tony	Sutton
Brett	Goulding	Marshall	Thompson
Greg	Helton	Jeff	Watts
Tyler	Hill	Jacob	Williams
Kendall	Huffman	NCFAs staff present for some or all of the meeting:	
David	Johnson	John Hatcher	
Alec	Kearns	Jessica Ireland	
AJ	Lang	Mike Powell	
		Abigail Ridge	

MEETING AGENDA
North Carolina SFI State Implementation Committee
Joint Meeting with NCFAs Safety, Logging and Transportation Committee
February 4, 2026 – North Carolina Farm Bureau - 9:30 a.m. – 1:00 p.m.

JOINT MEETING WITH SLTC

- | | |
|---|---------|
| 1. WELCOME AND ANTI-TRUST COMPLIANCE STATEMENT | Reese |
| 2. INTRODUCTIONS | Reese |
| 3. LEGISLATIVE UPDATE | Hatcher |
| 4. CAROLINA LOGGERS ASSOCIATION UPDATE | Guill |
| 5. PROLOGGER TRAINING AND EDUCATION SUBCOMMITTEE REPORT | Daniels |
| 6. PROLOGGER TRAINING – MODULE 27 PLANNING | |
| 7. FORESTRY ISSUES UPDATE | Lang |

MOVE TO SEPARATE MEETINGS

- | | |
|---|----------|
| 8. RECOGNITION OF PARTICIPANT QUORUM | Reese |
| 9. REVIEW/APPROVAL OF MEETING MINUTES' | |
| 10. NC FOREST SERVICE – G1/G2 SPECIES PRESENTATION | Lang |
| 11. NC SIC TREASURERS REPORT | Burger |
| 12. SFI UPDATE | Reese |
| 13. INFORMATIONAL RESOURCES SUBCOMMITTEE REPORT | |
| 14. MARKET OUTREACH/RECRUITMENT SUBCOMMITTEE REPORT | Campbell |
| 15. LANDOWNER OUTREACH SUBCOMMITTEE REPORT | Phillips |
| 16. INCONSISTENT PRACTICES SUBCOMMITTEE | Burger |
| 17. ADJOURN | |

Statement on Compliance with Antitrust Laws in General

The North Carolina Forestry Association (NCFA) believes that fair and vigorous competition is essential to the maintenance of this country's free enterprise system. In furtherance of this principle, NCFA conducts all activities in strict compliance with antitrust laws. The staff, officers, directors, members, and committee members of the NCFA are reminded that they are required to comply with the spirit and requirements of all antitrust laws in general in all activities within the scope of and related to official functions of the NCFA.

A free exchange of ideas on matters of mutual interest to representatives of the forest products manufacturers, distributors, and others is necessary to the success of all NCFA meetings. Such an exchange of views is essential to the successful operation of every association. It is not the purpose of this policy to discourage the exploration in depth of any matters of legitimate concern to meeting participants.

The Sherman Antitrust Act, the Clayton Act, the Federal Trade Commission Act, and the Robinson-Patman Act comprise the basic federal antitrust laws, which set forth the broad areas of conduct considered illegal as restraints of trade. In general, agreements or understandings between competitors that operate as an impediment to free and open competition are forbidden. The broad language of the Clayton Act suggests the scope of federal antitrust prohibitions by forbidding any "agreement or understanding...to substantially lessen competition or tend to create a monopoly in any line of commerce."

Activities and practices which are forbidden include:

- *discussing the fixing or regulating of prices, markups, or the conditions or terms for the sale of lumber or wood products;*
 - *discussing the establishment of geographic trading areas, allocations of markets or customers, or classification of certain customers as being entitled to preferential treatment by manufacturers of lumber or wood products;*
 - *discussing or participating in any plan designed to induce any manufacturer or distributor of lumber or wood products to sell or refrain from selling, or discriminate in favor of or against any particular customer or class of customer;*
 - *discussing limiting or restricting the quality of lumber or wood products to be produced;*
 - *discussing or participating in any plan designed to control the means of transportation or channels through which lumber or wood products may be sold; and*
 - *discussing or participating in any plan which has the effect of discriminating against or excluding competitors.*
- This is, at best, a general outline of some areas which pose antitrust dangers in discussion between competitors and between sellers and their customers. If any question arises about an item on a meeting agenda, it should be reviewed by legal counsel prior to the meeting. If the question does not arise until the meeting has begun, that discussion should be avoided or stopped and not resumed until approved by legal counsel.

WELCOME AND ANTI-TRUST COMPLIANCE STATEMENT

Chair Will Reese reminded members that the meeting would be in full compliance with the NCFCA's policy on antitrust contained in the meeting materials.

INTRODUCTIONS/RECOGNITION OF PARTICIPATION OF QUORUM

Chair Will Reese declared that a quorum was present and that the meeting would proceed.

FORESTRY ISSUES UPDATE

- Technical Development
 - Created a Forest Market Development Specialist position for WNC. This was filled by Tim Adams. The position is based in Morganton and its purpose is to support the retention and profitability of existing forest product industries in Western North Carolina and promote the recruitment and expansion of new forest product industries and markets benefiting Western North Carolina communities and landowners. The overall goal is to increase timber market options available to forest landowners in Western NC. This position is being funded as part of the NCFCA's 5-year USFS Hurricane Helene recovery agreement.
 - Hulka will be conducting the 2025 Timber Product Output (TPO) survey from January to May by email and by some in-person mill visits. This survey complements the FIA data and estimates roundwood production across the state. Individual mill information is held strictly confidential, with only industry data summarized at the county and state levels (see [report: https://www.srs.fs.usda.gov/pubs/ru/ru_fs565.pdf](https://www.srs.fs.usda.gov/pubs/ru/ru_fs565.pdf)). The information is also used by NCSU Forestry Extension to demonstrate the overall economic impact of the forest products industry on North Carolina and individual counties.

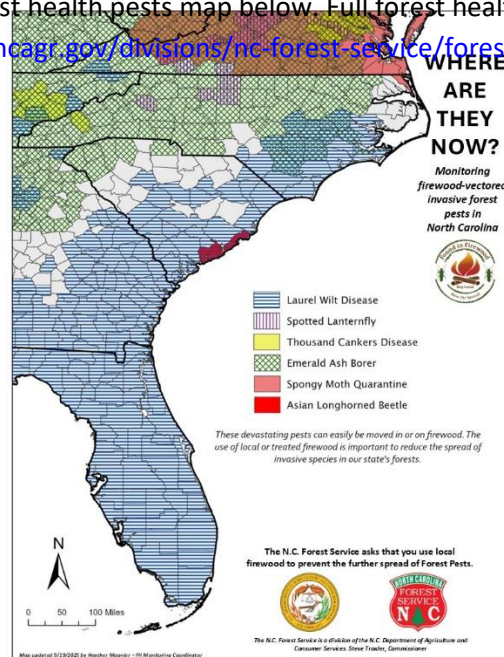
Contacts = Barry New, barry.new@ncagr.gov; Bryan Hulka, bryan.hulka@ncagr.gov

- Forest Management
 - A 5-year implementation highlights report of the 2020 Forest Action Plan was drafted will soon be published here: <https://www.ncagr.gov/divisions/nc-forest-service/forest-action-plan>. Check out the successes and challenges North Carolina forestry had between 2020 and 2025.
 - Secured \$44 million to put towards Helene timber loss payments for landowners. Further information on how these funds will be administered will be released in the coming months.

Contacts = Sean Brogan, sean.brogan@ncagr.gov; Ron Myers, ron.myers@ncagr.gov

- Other Notable items
 - 2025 State and Private Forestry Fact Sheet: <https://www.ncagr.gov/divisions/nc-forest-service/nc-state-private-forestry/open>. Covers multiple program area accomplishments
 - Don Roach, Forest Inventory and Analysis Coordinator, has hired 4 FIA foresters for WNC to accelerate plot data collection in WNC Helene counties.

- Spread of forest health pests map below. Full forest health report for 2025 linked here: <https://www.ncagr.gov/divisions/nc-forest-service/forest-health/forest-health-notes>



- Water Resources Updates

- FPG reports for FY25/26-Q1 (July thru Sept 2025) were emailed on 12/3/2025 from Richard Cockerham [Richard.Cockerham@ncagr.gov].
- FPG reports for FY25/26-Q2 (October thru December 2025) will be emailed in early February from Richard Cockerham [Richard.Cockerham@ncagr.gov].
- Since the last SIC meeting (Nov. 2025), we have made no new FPG referrals and one Buffer Rule referral. CY25 had one FPG referral and two Buffer Rule referrals.
- WOTUS – NCFS worked closely with the National Association of State Foresters (NASF) to submit comment on an updated definition of WOTUS regarding silvicultural implications. Email AJ for a copy of those comments.
 - The definition of “Waters of the US” is currently under review by the USACOE and USEPA following a May 2023 Supreme Court Ruling. A landowner (Sackett) in Idaho was accused of violating the Clean Water Act by grading and depositing dirt into a wetland during construction of a home when they were about 150 feet away from water. The identified adjacent protected wetland had no continuous surface connection to their property. The SCOTUS decision was that jurisdiction must have a continuous surface connection. Another newly proposed rule by the EPA intends to clarify what are jurisdictional waters of the US (request for comment was 11/20/2025). Those looking at this SCOTUS decision in a negative way believe that a high number of once protected fresh water wetlands will become unprotected and subject to land use change. Over 200,000 comments submitted/recorded in the FR.

- NCFS and NCFA have partnered to develop a Temporary Bridge Rent-to-own program using a \$500,000 USFS grant. Finalized program details are anticipated this spring. An application requesting another \$500,000 to further fund this program was submitted in December 2025.
- The second version of the Forestry Preharvest Planning Tool (FPPT2) was published and is accessible at this link: <https://www.ncmhtd.com/ncfs/fppt2/>. It is not yet on the NCFS website, but will be updated soon. Here are the quick highlights of the updated tool:
 - Webpage based.
 - No username/password needed.
 - Geolocation enabled (can see your blue dot location while using)
 - You can measure areas and lengths
 - Includes parcel boundaries, printed soil surveys, web soil survey, topo/aerial views, hillshade layer, and other features/layers
 - You can add your own points, lines, and polygons (using preconfigured templates, no streaming available)
 - You can export your data into .kml file (viewable in Google Earth)
 - You can produce a georeferenced .pdf map that is viewable offline (i.e. you can see your blue dot location in Avenza app offline).
 - User inputs are only viewable on the device and browser used to create data. The server hosting this information is cleared/erased each Friday at midnight.
- Add T&E data (G1, G2, T, and E information) into the FPPT2
 - SIC and NHPs in TX, FL, and LA have collaborated to create a master spreadsheet combining NHP information (county, spp, habitat, status, state rank, etc.) and SICs add in forest management recommendations. In other words, the SFI-SICs are using the freely available data, filtering/narrowing it by things that could be impacted by practicing forestry, and adding a quick blurb about what forest managers are doing on the ground to prevent take/safeguard the concern identified in NHP data.
 - I (AJ Lang) am asking the NC SFI SIC to initiate a sub-committee to review each listed G1/G2 and T&E listed spp. and assess whether forestry might impact it and if so, provide a recommendation for how it is being protected. The subcommittee and NCFS would create this master spreadsheet. NCFS would take this statewide spreadsheet and attach it as tabular data to county boundaries and integrate that as a layer into the FPPT2. Doing this will help raise awareness and possibly influence management decisions that would result in a positive outcome for T&E. I do not want this to be a comprehensive guide, rather an excellent starting point with links to NHP, NatureServe, FWS.

Contacts = AJ Lang, aj.lang@ncagr.gov; Richard Cockerham, Richard.cockerham@ncagr.gov; Duane Truslow, duane.truslow@ncagr.gov

Discussion: AJ Lang provided an overview of updates outlined in meeting materials (see above).

Will Reese: AJ Lang we will have a further discussion on the T&E after we break out into our separate groups.

Mike Powell: We included the preharvest planning tool in the module. It is a 2.0 of sorts with lots of modifications and improvements. To me this seems like something that will be very useful. What AJ has done has done in the breakdown is broken it down into not what soil type but what can you do with this soil type and that is the direction he wants to go with the T&E not just what is here but forester recommendaitonf for what is here and how to operatre. Removing the logins makes it no longer cumbersome and some of the functionalities are super useful. I do not use this everyday so please send comments and feedback to AJ.

Jamie Teel: AJ are you going to be available for the follow up SIC meeting?

AJ: I will be available until 12:30.

Mike Powell: I also wanted to thank AJ and the Forest Service for all their work on the bridge mat program and the harvest tool.

LEGISLATIVE UPDATE

Discussion: John Hatcher: Not a lot going on in the interim. A couple study committees we are keeping an eye on.

One on property tax reform in the house. Senator Burger formed his committee yesterday. One on energy with discussions about biomass but most of the discussions are focused on nuclear power. Duke Energy will be building several units in the coming years. We do not expect the budget until short session in April.

For the March 3rd primary, there is a husband and wife duo challenging both house chairs and also Paige and Burger have a lot of eyes on them.

Discussions with members about short session on the tax provision that got bogged down in committee for Helene to return retroactively.

Discussion about the property tax to allow corporations into the PUV program which would include TIMOs and REITs. They are not currently welcome, and we are the only southeastern state that does this. Several people are hesitant to change this because they do not want it to turn into the wild west.

Federal election year and we do not know if much it is going to move. We are watching what happens with Tillis's seat. Tillis was good to us with transportation provisions with the grandfathering and with immigration he was not afraid of working with the delegation.

In the markets, looking at the access issue with the EU in regards to pine chips and hardwood logs. Hope to move acorrs the finish line this year and looking into pine logs. Most of the sector can embrace this because of non-barrier trade issues.

Year 5 of the coalition to make some progress.

CAROLINA LOGGERS ASSOCIATION UPDATE

- Stacy Reel Announced New Chairman of the CLA Board
- Annual Meeting will be in Wilmington, NC at Hotel Ballast March 13th-15th, 2026.

Discussion: Mike provided an overview of the materials above.

- Jonzi Guill not able to be in attendance today.

PROLOGGER TRAINING AND EDUCATION SUBCOMMITTEE REPORT

-Currently there are 1183 Prologgers in good standing going into 2026 (1241 in 2025).

Module 26 Topics : Approved for **2.5 Category 1 CFE Hours**

- **Pre Harvest Planning BMPs** - Jordan Lumber and Timber Stand Improvements Bruce Evan and NC Forest Service Duane Truslow go over Pre Harvest Planning BMPs and highlight the NCFS new Pre Harvest Planning Tool.
- **Business of Logging** – Cash Flow – Quick overview on how Cash Flow effects a Logging Business.
- **Storm Damage Clean Up** – Partnered with Forestry Mutual Insurance Company’s Greg Helton and Shawn Faulks in Western NC to assess Post Hurricane Helene Storm Damage recovery. How to safety operate in post Storm Clean up.
- **Business of Logging – Workforce Development and Succession Planning** – Fourth Video in a series of Logging and Forestry Business. How to improve workforce development, employee retention, and succession planning for your Forest Products Business.
- **Trucking Liability and Exposure** – Sit down with NC Trucking Association’s Executive Ben Greenburg and Ezzell Trucking President Catherine Ezzell. Overview on the business of Trucking and how to insulate your business form exposure and liability.
- **Right a Ways and Transmission Lines** – Partnered with Duke Energy on how to safely operate logging operations around Powerline Easements.
- **Temporary Access Permit** – Rules and Regulations for NC’s Law regarding Logging Temporary Access Permits.

Total Run Time : 2 Hours and 25 Minutes

-Module 26 is live Online via Online Classroom and Module 26 Disks will be available upon request:

-If you are interested in hosting a Module 26 class, please coordinate with Mike Powell mpowell@ncforestry.org with dates and location.

Discussion: Chuck Daniels and Mike Powell provide an overview of the materials above.

Chuck Daniels: It has been an honor to serve and work with Mike Powell and the committees that have contributed. Everyone knows what that means to the heart and soul of the NCFA. The importance of the program and the continuous improvements when Mike Powell came made the ProLogger program picked up and it has been remarkable and maybe even the best in the southeast. Not just Mike Powell but everyone who has contributed and hosted the baseclass etc. Please continue to give comments and feedback so we can move forward. Mike helps make my job easy by providing the numbers. Thank you all for allowing me to serve

Mike Powell: Thanks Chuck Daniels, I do not deserve all that. This meeting gives us the direction for next year and that’s why I really wanted to meet today. The ideas and participation could not happen without all y’all’s help. I believe in my heart that ProLogger has been the gold standard since the 90s. We cover a topic after listening to partners and members with a data driven approach to make sure these videos are relevant and helpful for the loggers. You are all the real power behind this program. I am not afraid to cover the same topc every year if the data shows we need to continue

until the point is driven home and there are no more issues with it. The conversations following this means a lot to me so please take it seriously.

PROLOGGER TRAINING – MODULE 27 PLANNING

Discussion:

Mike Powell: Last year we had everyone go around and name one topic they would like to see and I will say 98 percent of those were used. They were not a title maybe, but they were included in another video.

Jamie Teel: At the FRA meeting in Wilmington, it was brought up that the safety around doing the maintenance in a stroke delimeter. They are not very user friendly.

Greg Helton: That is a good point bc they are not user friendly on maintenance we do not have anything currently on that.

Amy Phillips: One we should hit again and again is speaking to the SFI standard about what are you doing to address your top BMP violations and that is for us stream crossings. I do not know if there is somewhere to mesh stream crossing and the new bridge program to show we are addressing a persistent problem.

Mike Powell: Timing wise on the bridge mat it will be out. NCFA will be acting out as the administration because it is a rental program therefore, we are the original purchaser of the bridge on day of rental and then transfer the title. It will be right after ProLogger wraps up and could encourage some applications to follow through. I had stream crossings written down and we have not done a sole one since I have been here. What would we like that to focus on; brush, lapping, rehabilitation, etc?

Mike Chestion: You can put bridges and lap them appropriately, but when you pull them up you may ruin the whole thing so make sure to include installing and removing.

John Nash: Rehabilitation is what everyone sees at the end of the day and has been a big topic as of lately.

Mike Powell: AJ Lang is there data to support the number of rehab on jobs that have to come back to months after it is taken out. Is there a way to make the connection of doing it correctly the first time?

AJ Lang: There is data on how much the cost is to implement rehab measures not so much how to move back on the track because that is variable based on equipment. There is immediate data but it is very clear that it is very more expensive than just doing it right the first time. Installation removing rehab and even during when lapping up the bank.

Ethan Campbell: Driving home the rehab is great but we should harp on doing it right the first time.

Chuck Daniels: Encourage involving the forest service when you have a gray area for the buy is key for preventing problems from the beginning.

John Hacher: A couple years ago when we revised the pocket guide so many members brought that up and just them reminding what the forest service offers to our members.

Ethan Campbell: I think contacting the forest service goes a long way for SFI companies especially for documents.

Alec Kearns: Also, having the forest service come before you leave and see bridges that are lapped up especially when it has pulled up all the dirt and slash tumbles over and still leads to a huge clean up so keeping a couple logs on the side out of the creek is key.

Jess Parton: Culvert installation would also be good to cover in a stream crossing video, more specifically permanent versus temporary and how to calculate what diameter culvert to use. Also, some type of insurance presentation on understanding liability and understanding how much coverage they actually need to protect themselves, not just the minimum required by law or the mills that they are working for.

Mike Powell: Stem to stern on stream crossing seems to be the conclusion here for getting a good video on getting from one side of the stream to the other.

We are in the final stages of running up the TTF at the end of the year so that was funding all of our business resources for the logging community. I am not around loggers every day so if there is any topics or lessons that you do not need to elarnt he hard way that would be of value of the loggers.

Will Reese: Make sure loggers know what the creeks look like when they're done. Foresters need to get the point across why it is so important to do it right from the start. It varies from crew to crew so it just important to get them trained and explain why it is important.

Matt Allen: Reading maps and slopes and topography and having access to a soil survey to minimize rutting. Especially after a big rain or snow event.

Ethan Campbell: You are seeing more and more young people filling the gaps and providing them with geomaps would be good just to let them know what the options are.

Ben Burger: A safety concern near and dear to me in New Bern is there are half dozen loads of wood that a piece is only held by one strap and most mills shave binding racks but it feels like the fact that it keeps happening means maybe there is a disconnect with the loader in the woods. I'm not sure.

SRGT Blackwell: In the last little bit of time we are not specifically seeing anything from the loggers. Overall a good thing. I do not have anything at this time.

Andy Sterling: DOL the stuff we talk about is there are not a whole lot of incidents except with unloading. People falling off when unloading or loads falling off and killing people.

John Cecil: Safety ppe usage and separation of felling and skidding procedures.

Tony: Communication from start to the track setting up and understanding what the mill does and doesn't want. It wastes a lot of time and money sending things back.

Garret Sumner: Foresters get so specialized. One might know something about logging but doesn't know anything about fire or fertilization. It would be good to give our members a short elevator speech for when dealing with the general population about why this is happening and why it is a good thing.

Graycen Byrd: Rehab when you get done creek crossing and making sure roads are right.

Jared Lucas: Overall methods of crossing streams and getting everyone on the mindset of what it looks like now and what it should look like when done. We had an issue with a consulting forester who did not like how it looked but the

forest service said it was fine. Also truck driver safety is something we deal with but the people watching this are not truck drivers so I don't know how to get that to the driver from the crews.

Greg & Jacob Williams: Everything we have been talking about we made a list: 87 claims with truck drivers and only 39 were wrecks and the other claims were binding loads including short wood and from throwing the straps, landing gears, body placement. Traffic in the yard. Complacency kills whether with ppe or 3 pts. Falls off the tucks and pre and post trip inspections. Distracted driving brings up dash cams again.

Mike Cheston: Invasive species whether it relates to plants or bugs and relating it to different places and times of the year. Let's say there was siltgrass in one spot and then the skidder drags it and then in the spring it is everywhere.

Brett Goulding: Maintenance on equipment. When I roll up to the job, there is creative ingenuity happening when things are getting fixed. Corners are being cut and there are a lot of things happening. Nice section on safety and repairs.

Another thing is when accidents happen, the trial attorneys will come after everyone and there is grey areas with subcontractors and employees so directions to give subcontractors to give liability comfort. Communication is crucial.

Alec Kearns: Along the lines of communications, I know last year we spoke about bilingual signs and I am seeing the only expansion is latino crews whether they are joining as individuals or as whole crews. Do we have a Spanish version of bmps and how are we embracing and improving this?

Mike Poweell: This year the new videos have the bilingual closed captions so all but two in the ProLogger have them. Please ask your Spanish speaking crew members if this all makes sense. We had a third party come in the make sure it works.

AJ Lang: We have the pocket guide translated in Spanish so just working through red tape but will be here sometime in 2026.

Ethan Campbell: We already touched on this but technology.

Chuck Daniels: Safety focused on what is life threatening. What we are seeing at our mill we have two cranes that remove whole loads or half loads and walking under the grapple will kill you loading or unloading. Overloading of trucks on the road does not give you a ticket unless it is dragging but has potential to kill.

Sherri Halstead: Anything safety and ppe is an issue with the drivers at our mill but they aren't watching the videos so how do you hammer this.

Gail Currie: Going off of Amy, every time I look through fpgs and bmps it goes back to the stream crossings. It's not just going in the woods but coming out of tracks as well. There have also been issues with trucking. There are safety videos at mills you watch before coming so can we have a ProTrucker? And can address all the trucking stuff that the bossman cannot tell them in a meeting.

Tommy Sanford: Scalers hammered me on ppe requirements for being able to get off the truck. Where it is safe to get out of the truck. Language barriers, not all facilities are equipped for that and these drivers need to know where to go so they can come back again tomorrow. Need to move things quickly and safely.

Robby Evans: I think the biggest thing is to stress the importance to ProLoggers to not only talk to foresters but the crew as well. The foreman may not be the one pulling the stream crossing. While it is not required for everyone to be a ProLogger, we need to make sure the ProLogger knows it is their responsibility to communicate all these points to them. Communication from the people we are talking to need to be stressed to passed down.

Sammy MacDonald: Dash cams and trackers that can track speed and other factors can be helpful.

John Nash: There is an appropriate space that needs to be for subcontractors from a legal or insurance perspective on where are your blind spots and where are you vulnerable. Appropriate to have the discussion of common issues discussions. What needs to be listed in your agreement to make sure youre covering as much exposure as possible.

Tyler Hill: Cold weather with trucking or logging. Also could plug ways to get involved in the NCFE.

Chris Manus: Public relations training. Also a general understanding and some training on SFI as a principle. Audits seem to want to talk to everyone now not just the front man.

Hunter Games: Communications is key. Nothing is more frustrating when people do not answer the phone or are on vacation without telling you. Let people know a secondary option to contact, especially with quotas being so low. It is costing lots of money with loads being turned around.

Austin Fields: How to be safe around stuck equipment and trucks. I catch myself and others standing around and what if a cable breaks or the truck rolls over. This can be included in stream crossings with the cutter getting stuck. People do not think about the chain snapping loading falling. Out of cab safety.

Kendall Huffman: Safety and communications. I can not count how many times I have been flagging lines with the cutter man not answering and being right near cutting lines.

Marshall Thompson: The rehabilitation conversation but utilizing state resources. Truck driver side the ProLogger is supposed to communicate to them.

David Johnson: Our loggers need to think about successional planning.

Evan Gobble: Develop sop's for new employees and where to be and not to be to be safest on jobs.

Amy Phillips: What is required for load containment. Proper number of straps etc.

Preston Battle: Communications with Hispanic truck drivers and crews.

Chris Yuger the maintenance of thr trucks lots of breakdowns

Jamie Teel: The bilingual world is here and there are not many mills prepared with signage or truck trainings in different languages. No matter what, the truck driver is a subcontractor. Also maybe think about making a segment of like 3-minute refreshers about various things.

John Smith: Log Truck driver safety and compliance while on mill yards. Good attitudes toward scalehouse attendants & crane operators, careful observance of moving vehicles and personnel (forklifts, utility vehicles). Proper PPE, no passengers beyond the scales.

Andrew Brown: I know it wouldn't be current for long but what about a video on what technology exists for communicating in different languages in the woods with or without internet service. I think we all can use different

things but highlighting what works for some. Also, I think entrenched roads are a big problem that will continually cause problems... the old road is not necessarily the best. How do we use entrenched roads and how do we close them out if we have to use them.

Scott Asheworth: Almost all of our tracts have gates at the boundary line. Most private landowners have gates also. Therefore, gate safety is an issue. 10-15 yrs ago one of our NC Consultant Office's lost a forester at a gate. He got out of the truck to unlock the gate without putting the truck in park. The truck quietly crept up on him and crushed him while he was unlocking the gate. The same thing happened to one of our TX foresters a month ago. He survived the accident because he was able to shout to his phone in the truck to call for help. I have made the same mistake more than once, by jumping out of the truck at a gate without putting the truck in park, but in my case the truck moved and I corrected my error. This is a common sense topic; it could be covered in a mini module section of 2-3 minutes, but it is applicable to anyone (Forester or Logging crew member) working alone on the woods.

MOVE TO SEPARATE MEETINGS

REVIEW/APPROVAL OF MINUTES OF THE LAST MEETING

Chair Will Reese asked members to review the minutes from the last meeting.

Motion to approve the minutes by Marshal Thompson and a second from Ben Burger

Amy Phillips taking over as chair and Ben Burger as vice chair. Andrew Brown has been nominated to step in as Treasurer

Amy Phillips: We need votes and approval for Andrew to step in as treasurer.

Motion to appoint Andrew Ethan Campbell and second by Chuck Daniels.

Amy Phillips: Congratulations to Andrew Brown and the new folks in subcommittee chair positions: Andrew Brown Informational Resources Chair

Vote for Ethan Campbell Market Outreach chair, motion John Cecil and seconded by Chuck Daniels.

NC SFI SIC TREASURER'S REPORT

2025 SIC Checking	Payable/Deposit	DESCRIPTION	CATEGORY	DEBIT	CREDIT	BALANCE
12/31/2024		<i>End of 2024 Checkbook Balance</i>				\$1,115.99
1/28/2025	Steve Cox	Q4 2024 IPM	Inconsistent Practices	\$625.00		\$490.99
1/31/2025	Deposit	dues	dues		\$7,943.46	\$8,434.45
1/31/2025	Deposit	dues	dues		\$11,915.20	\$20,349.65
1/31/2025	Deposit	deposit	interest		\$0.06	\$20,349.71
2/10/2025	Deposit	dues	dues		\$4,422.00	\$24,771.71
2/10/2025				\$11,915.20		\$12,856.51
2/10/2025				\$7,943.46		\$4,913.05
2/26/2025	Deposit	dues	dues		\$1,314.84	\$6,227.89
2/26/2025	Swansboro High School	2025 grant	Public Outreach/ Education	\$1,872.00		\$4,355.89
2/26/2025	Cleveland High School FFA	2025 grant	Public Outreach/ Education	\$4,200.00		\$155.89
2/28/2025	Deposit	dues	dues		\$3,805.04	\$3,960.93
2/28/2025	Deposit	deposit	interest		\$0.79	\$3,961.72
3/3/2025	Deposit	dues	dues		\$3,472.13	\$7,433.85
3/6/2025	Deposit	dues	dues		\$1,774.08	\$9,207.93
3/7/2025	Deposit	dues	dues		\$19,533.02	\$28,740.95
3/11/2025	Deposit	dues	dues		\$1,950.40	\$30,691.35
3/11/2025	Deposit	dues	dues		\$14,518.60	\$45,209.95
3/12/2025	FECF	2025 grant	Public Outreach/ Education	\$9,000.00		\$36,209.95
3/21/2025	Parkwood Middle FFA	2025 grant	Public Outreach/ Education	\$1,994.00		\$34,215.95
3/31/2025	Deposit	dues	dues		\$60.73	\$34,276.68
3/31/2025	Deposit	dues	dues		\$1,091.33	\$35,368.01
3/31/2025	Deposit	deposit	interest		\$2.56	\$35,370.57
4/3/2025	Deposit	dues	dues		\$20,371.50	\$55,742.07
4/15/2025	Deposit	dues	dues		\$1,483.33	\$57,225.40
4/22/2025	Deposit	dues	dues		\$3,112.00	\$60,337.40
4/30/2025	Deposit	deposit	interest		\$4.55	\$60,341.95
5/7/2025	Deposit	dues	dues		\$810.00	\$61,151.95
5/14/2025	Will Reese	SFI Annual Conference - virtual	Amin- misc	\$250.00		\$60,901.95
5/31/2025	Deposit	deposit	interest		\$5.17	\$60,907.12
6/3/2025	Arborbrook Christian Academy	2025	Public Outreach/ Education	\$3,002.53		\$57,904.59
6/20/2025	Deposit	dues	dues		\$7,163.01	\$65,067.60
6/30/2025	Deposit	deposit	interest		\$5.00	\$65,072.60
7/18/2025	Deposit	dues	dues		\$307.88	\$65,380.48
7/31/2025	Deposit	deposit	interest		\$5.54	\$65,386.02
8/7/2025	NC Tree Farm Program	budget commitment	Landowner Outreach	\$8,000.00		\$57,386.02
8/13/2025	Deposit	dues	dues		\$10,810.00	\$68,196.02
8/14/2025	Deposit	dues	dues		\$296.28	\$68,492.30
8/31/2025	Deposit	deposit	interest		\$6.13	\$68,498.43
9/11/2025	FECF	SFTE	Public Outreach/ Education	\$45,000.00		\$23,498.43
9/30/2025	Deposit	deposit	interest		\$5.04	\$23,503.47
10/31/2025	Deposit	deposit	interest		\$2.00	\$23,505.47
11/4/2025	Deposit	dues	dues		\$2,891.82	\$26,397.29
11/14/2025	Deposit	dues	dues		\$1,805.34	\$28,202.63
11/14/2025	Deposit	dues	dues		\$2,708.00	\$30,910.63
11/19/2025	Deposit	dues	dues		\$10,419.00	\$41,329.63
11/20/2025	Deposit	dues	dues		\$810.00	\$42,139.63
10/30/2025	Deposit	deposit	interest		\$2.69	\$42,142.32
12/11/2025	FECF	budget commitment	Admin, ProLogger	\$30,000.00		\$12,142.32
12/31/2026	Deposit	deposit	interest		\$1.86	\$12,144.18

2026 SIC Checking	Payable/Deposit	DESCRIPTION	CATEGORY	DEBIT	CREDIT	BALANCE
12/31/2025		<i>End of 2025 Checkbook Balance</i>				\$12,144.18
1/8/2026	Pioneer Design	Website hosting & Software Licenses	info resources	\$570.00		\$11,574.18

NC SIC 2025 Budget

	2025 Budget	2025 Actual	
SIC Dues	\$110,000.00	\$114,930.33	104.5%
Interest	\$100.00	\$41.39	41%
Total	\$110,100.00	\$114,971.72	104.4%

Administrative			
NCFA	\$21,000.00	\$21,000.00	
Misc Exp	\$250.00	\$250.00	
Travel	\$0.00		
Total	\$21,250.00	\$21,250.00	100%
Landowner Outreach			
Landowner Guide	\$0.00		
Tree Farm	\$8,000.00	\$8,000.00	
Misc. Landowner Outreach	\$0.00		
Total	\$8,000.00	\$8,000.00	100%
Training and Education			
Sustainable Teachers Academy	\$45,000.00	\$45,000.00	
Forestry & Environmental Camps	\$0.00		
Goods from the Woods boxes	\$0.00		
ProLogger Video	\$9,000.00	\$9,000.00	
Total	\$54,000.00	\$54,000.00	100%
Information Resources			
Promote SFI at NC Legislation	\$0.00		
Certification Workshops	\$0.00		
Purchase 1 Display/Materials	\$0.00		
NC SIC Website	\$1,000.00		
Total	\$1,000.00	0	0%
Market Outreach			
NC SIC Booths	\$0.00		
Purchase Displays/Materials	\$0.00		
Customer Communication	\$0.00		
Recruitment	\$0.00		
Total	\$0.00		
Grants Approved			
Cleveland FFA	\$4,200.00	\$4,200.00	100.0%
Arborbrook Christian Academy	\$3,000.00	\$3,002.53	100.1%
Parkwood FFA	\$2,000.00	\$1,994.00	99.7%
Swansboro High School	\$1,872.00	\$1,872.00	100.0%
FECF- PLT	\$9,000.00	\$9,000.00	100.0%
Total	\$20,072.00	\$20,068.53	100.0%

Inconsistent Practices			
Monitor / Phone Lines / Reporting	\$0.00	\$625.00	
Reporting	\$0.00		
Consultants	\$1,500.00		
Total	\$1,500.00	\$625.00	42%
<hr/>			
Total Expenses	\$105,822.00	\$103,943.53	98.22%

NC SIC 2026 Budget

	2026 Budget	2026 Actual	
SIC Dues	\$108,500.00		
Interest	\$50.00		
Total	\$108,550.00	\$0.00	0%

Administrative			
NCFA	\$21,000.00		
Misc Exp	\$250.00		
Travel	\$0.00		
Total	\$21,250.00	\$0.00	0%

Landowner Outreach			
Landowner Guide	\$0.00		
Tree Farm	\$8,000.00		
Misc. Landowner Outreach			
Total	\$8,000.00	\$0.00	0%

Training and Education			
Sustainable Teachers Academy	\$45,000.00		
Forestry & Environmental Camps	\$0.00		
Goods from the Woods boxes	\$10,000.00		
ProLogger Video	\$9,000.00		
Total	\$64,000.00	\$0.00	0%

Information Resources			
Promote SFI at NC Legislation	\$0.00		
Certification Workshops	\$0.00		
Purchase Display/Materials	\$0.00		

NC SIC Website	\$1,000.00	\$570.00	
Total	\$1,000.00	\$570.00	57%
Market Outreach			
NC SIC Booths	\$0.00		
Purchase Displays/Materials	\$0.00		
Customer Communication	\$0.00		
Recruitment	\$0.00		
Total	\$0.00	\$0.00	#DIV/0!
Grants Approved			
Franklin School of Innovation	\$825.00		
DuPont State Recreational Forest	\$9,000.00		
Total	\$9,825.00	\$0.00	0%
Inconsistent Practices			
Monitor / Phone Lines / Reporting	\$0.00		
Reporting	\$0.00		
Consultants	\$1,500.00		
Total	\$1,500.00	\$0.00	
Total Expenses	\$105,575.00	\$570.00	0.54%

If dues match last year (\$107K), we end the year with \$4859

Discussion: Ben Burger provided an overview of the updates outlined in meeting materials (see above).

Books were audited this morning so we are in compliance with SFI standards.

Motion to accept the budget John Cecil and seconded Chuck Daniels

SFI UPDATE

Discussion: Will Reese: There are no updates.

Amy Phillips: I encourage you all to go back to the TPO survey. That is one way we can meet an SFI standard to participate in growth and drain assessments. Easy way to check that box of meeting objectives. Also, since we do not normally have updates from national SFI, what if we had a 5 minute session about an audit that caught you off guard or maybe something you did well so we all know what to do?

Jamie Teel: I think this would be beneficial to do every meeting. Every auditor is different, so it is good to know what to keep in mind.

Chris Manus: An auditor for us wanted to talk to not only the foreman but other members of the crew who did not know a lot about SFI standards and caught us off guard.

Amy Phillips : At Weyerhaeuser are on a group certificate so it is a sample of the whole company and the auditor wanted to go to active jobs to talk to people. Years ago that was practice and then was changed to no interaction but now it is coming back around to them wanting to talk to people.

Andrew Brown: I have created one pagers for our loggers before and I would love to hear what the standard is for writing up a logger for not knowing what SFI means. However, there is no where in the standard that says a logger or contractor needs to say a certain thing in the woods.

INCONSISTENT PRACTICES REPORT

EXHIBIT C

INCONSISTENT PRACTICES MONITORING PROGRAM - LOG					
Year: 2024 4th Quarter					
	Q1	Q2	Q3	Q4	Total
Total Number of Phone Calls	0	0	1	0	1
Total Number of Invalid Phone Calls	0	0	1	0	1
Total Number of Valid Phone Calls	0	0	0	0	0
Open Inconsistent Practices	0	0	0	0	0
Closed Inconsistent Practices	0	0	0	0	0
Open FPG Inconsistent Practices	0	0	0	0	0
Closed FPG Inconsistent Practices	0	0	0	0	0
Total Open Inconsistent Practices	0	0	0	0	0
Total Closed Inconsistent Practices	0	0	0	0	0
Notes:	We had no valid calls to the Hot Line or contacts on the website. There were no inconsistent practices of SFI companies in the FPG Report for (FY 25-26 Q1) dated 12/3/25.				
Submitted by Ben Burger, IPM Chair 1/22/26					

Discussion: Ben Burger provided an overview of the updates outlined in meeting materials (see above). I was contacted about a site that was derocked after a thinning but not a member company so that will show up in Q1 as an invalid call.

INFORMATIONAL RESOURCES SUBCOMMITTEE REPORT

Discussion: Andrew Brown no updates but if there are informational needs please let me know and we will make it happen.

MARKET OUTREACH/RECRUITMENT SUBCOMMITTEE REPORT

Plan to attend county/local forestry association event(s) in Q1 (Tri County Forestry Banquet and Northampton Co). I will ask about setting up the display even though we will not be sponsoring.

Discussion: Ethan Campbell: I threw around some ideas from the last meeting (see above) and those are in action.

LANDOWNERS OUTREACH SUBCOMMITTEE REPORT

N.C. Tree Farm Program Report

February 4, 2026

Inspections and Certifications

Currently Certified	2025 New Certifications	2025 Decertifications
Tree Farms: 685	Tree Farms: 21	Tree Farms: 49
Acres: 215,089	Acres: 5,904	Acres: 10,545
		Reason: 5 deceased, 12 sold, 17 no interest, 15 no response

Outreach and Education

2026 Planned Programming

Claridge Nursery field tour, Goldsboro, January 6, 25 attendees

- overview of the nursery operation
- tour of packing area, seed extraction, seed orchard and bare-root lifting

Forest Management Plan Writing Workshops

- Feb. 17: Stan Adams Training Center, Chapel Hill
- Feb. 19: Kanuga Conference Center, Hendersonville
- Feb. 26: Cunningham Research Station, Kinston

Learn and Burn

- Jones County, date TBD

Conservation Equipment Field Day, April 9, Monroe

- Compact tractors and implements, UTVs and implements
- Power hand tools
- Herbicides and applicators
- Safety gear

Annual Meeting, Broadwell Brothers Tree Farm, May 16, Bladen County

- Prescribed burning, certified burner program
- Longleaf pine restoration, conversion from loblolly, pine straw raking
- Wetland restoration, Carolina bays, cost-share programs
- Wildlife, Safe Harbor Program, quail habitat, turkey, deer, fox squirrel

Safety Workshops, Randolph County, Harnett County, Northampton County, September (dates TBD)

- CPR, First Aid, AED
- Partnership with N.C. Agromedicine Institute

Webinars:

- Q1: An Overview of Timber Taxes, USFS, Feb. 11
- Q2: Impact of flooding and landslides on wildlife and wetlands
- Q3: Fireflies of North Carolina
- Q4: Chainsaw Mishaps and Other Spooky Stories: How Not to Become a Statistic

2025 Accomplishments

Quarterly webinars

- Q1: Overcoming Challenges for Managing Small Woodlots: March 6, 172 participants
- Q2: Wildfire Control in the Wake of Helene: May 15, 83 participants
- Q3: Pond Management: September 18, 162 participants
- Q4: Beaver Management, November 20, 133 participants

Field Tours

- October 30, Cary, 60+ attendees
Topics: the challenges of sustainable forest management in an urban setting, longleaf pine management and genetics, conservation easements and PUV
- November 1, West End, 80+ attendees
Topics: prescribed burning, beaver ponds, cost-share programs, longleaf restoration

Annual Meeting

April 24 @ First Fruits Farm in Louisburg

- 131 attendees
- Topics: pond management, bird habitat management, sustained-yield forest management, agritourism

Forestry 101 Program:

Discussion: Leslie McCormick provided an overview of the updates outlined in meeting materials (see above). We appreciate the support of this committee and the individual companies support so thank you all for that.

NCFA/FECF EDUCATION PROGRAMS UPDATE

Sustainable Forestry Teachers Experience

- The agendas are close to being finalized for both programs, July 20-24-Greensboro and July 27-31-Asheville.
- The application process is open and closes on March 6; as of Jan. 21, we already have 79 applications.

AN53 Natural Resources II-Forestry Course & Credential

- The Craven Community College VOLT Center Forest Worker Program is in session. Beginning in Spring 2025; they are also working on establishing a partnership with West Craven High School so that this program can be offered through dual enrollment.
- 21 students were awarded the Forest Worker Credential in the Fall 2025 semester.
- We conducted outreach to 11 public school districts and 45 private schools (via the NC Association of Independent Schools) regarding adding the AN53 course/Natural Resources Pathway.
- We are partnering with SAF to offer a pilot of the Candidate Certified Forest Technician Credential through the AN53 course.

FECF Scholarship Program

- The application process for the 2026 scholarship program is open and closes on March 27.
- We are awarding two \$2,000 scholarships to NCSU students and one \$1,000 scholarship each to Montgomery, Wayne, and Haywood CC students.

Goods from the Woods

- We ordered supplies and assembled 1,000 kits for distribution to NC educators.
- We added biochar as an example of an emerging forest product.
- Thank you to the SIC for your support of this program!

Discussion: Jessica Ireland provided an overview of the updates outlined in meeting materials (see above).

NEW/OTHER BUSINESS

G1 & G2 subcommittee for the Preharvest planning tool:

Amy Phillips: AJ Lang needs us to gather some people to help work on this or anyone on the call.

Jamie Teel: Basically, what the committee has done in the initial change is satisfactory to the standards and will pass audit but AJ Lang wants to update his tool which is free to the public. He is open to expanding it to another layer to hit another part of the standard. Is the committee interested in pursuing this layer? AJ Lang will be the lead, and he mentions that he wants to raise awareness but wants to get it to a county type level. (Pg 9 in minutes)

Amy Phillips: Is this something we want to be a part of and if so who is willing to help?

Jamie Teel: One additional comment in the role I play for Smurfit WestRock Florence, if there are additional tools on the table easy to use and no cost our recreation is why not.

Gail Currie: For Weyerhaeuser we pay for these tools, but our suppliers do not and we are requiring them to know about G1 and G2 so it would be beneficial for us.

Amy Phillips: I hate to throw a percentage but 2/3 of them are aquatics things so fpgs are all it takes for the species so this is not as daunting as it seems.

Will Reese: One option would be to see if consultants could compile this information for us. I know our company has consultants that do this for us.

Jamie Teel: Ann Duff has volunteered and has done this in a few states already.

Ben Burger: Ann Duff said that in Florida every Friday for 1.5 hours we broke it down and National Heritage has this list so its thinking of how does forestry affect this. AJ wants a 5 column spreadsheet that he can put in the background layer of his tool.

Ben Burger: I think it is something we definitely need to pursue because our buyers are looking for this information and with the EUDR stuff we need a to trace back things back to everything so better to be.

Amy Phillips: And this is another add to make this tool a one stop shop for people to use. Sounds like we want to be a part of this.

Motion to form a subcommittee by Andrew Brown and seconded by Jamie Teel

Amy Phillips: Do we have any volunteers? Gail Currie and Jamie Teel, Garrett Sumner and Andrew Brown

We will need a lead person to reach out to AJ not necessarily a chair yet. Jamie Teel will be the lead. AJ may be the chair.

Forestry Day in the Legislature – May 12th, 2026: The NCFAs Forestry Day in the Legislature will take place on May 13th, 2025, from 5:00 – 8:00 pm. at the Merrimon-Wynne in Raleigh. Forestry Day is a great opportunity for NCFAs members to reach out to their elected officials about the important role forests and the forest products industry in North Carolina.

NCFAs Annual Meeting – September 23-24, 2026

The NCFAs Annual Meeting will take place in Cherokee, NC

NC SFI SIC MEETING DATES:

- May 20th, 2026 at the NCFAs Office

-September 9th, 2026 at the NCFAs Office – Grant Review

-September 15th, 2026 at the NCFAs Office

-November 17th, 2026 at the NCFAs Office

18. ADJOURN

Motion to adjourn by Will Reese second by Marshall Thompson.

DRAFT